

# CIPHER SOFTWARE

The Cipher dissolution control software is a Windows based application designed and developed by Distek which can be installed locally or networked providing full access to any Distek dissolution instrument on the network. Cipher offers the flexibility to set the level of security appropriate for your laboratory. When enabling all available security features and audit trails and combined with the appropriate customer developed policies, Cipher will meet 21 CFR part 11 compliance. Easy to use and intuitive, the Cipher software features make preparing, running, monitoring, and reporting dissolution test results quick and easy.

- **21 CFR PART 11 COMPLIANCE**

Combined with the appropriate customer policies, Cipher balances the requirements of compliance with limited intrusion on user activities.

- **METHOD WIZARD**

The user is walked through method setup for a dissolution instrument and autosampler.

- **LIMS COMPATIBLE**

When configuring the system, two clicks of the mouse permit the automatic exporting of result files in an ASCII format for access and use by a LIMS package.

- **eSIGNATURES**

The use of electronic signatures guarantees that only approved methods can be used and reports released.

- **INSTRUMENT NETWORKING**

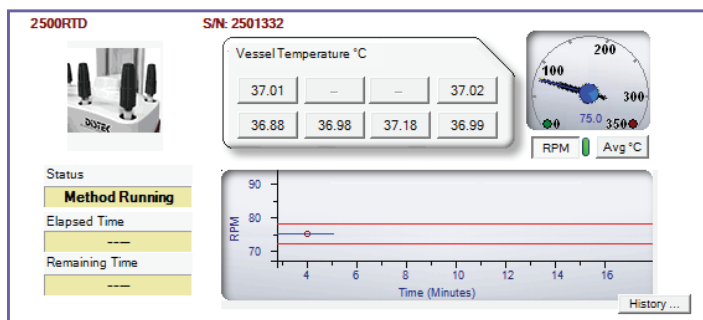
Users are able to log on to a client work station and view the current status of any Distek system on the network. Permits real time, remote instrument setup and monitoring.

- **AUDIT TRAIL**

Event, system and method changes are tracked with a computer generated date and time stamp. Additional information logged includes the user, old and new values, and the reason for change.

- **COMPENDIA ALERTS**

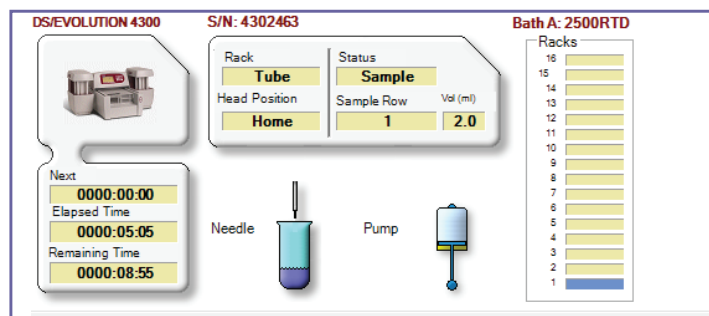
The user can set the specific tolerance parameters for rpm and temperature requiring the system to alert the user should a reading fall outside the acceptable range.



**BETATEK INC.**  
Instrumentation Superbly Supported  
L'instrumentation à son meilleur

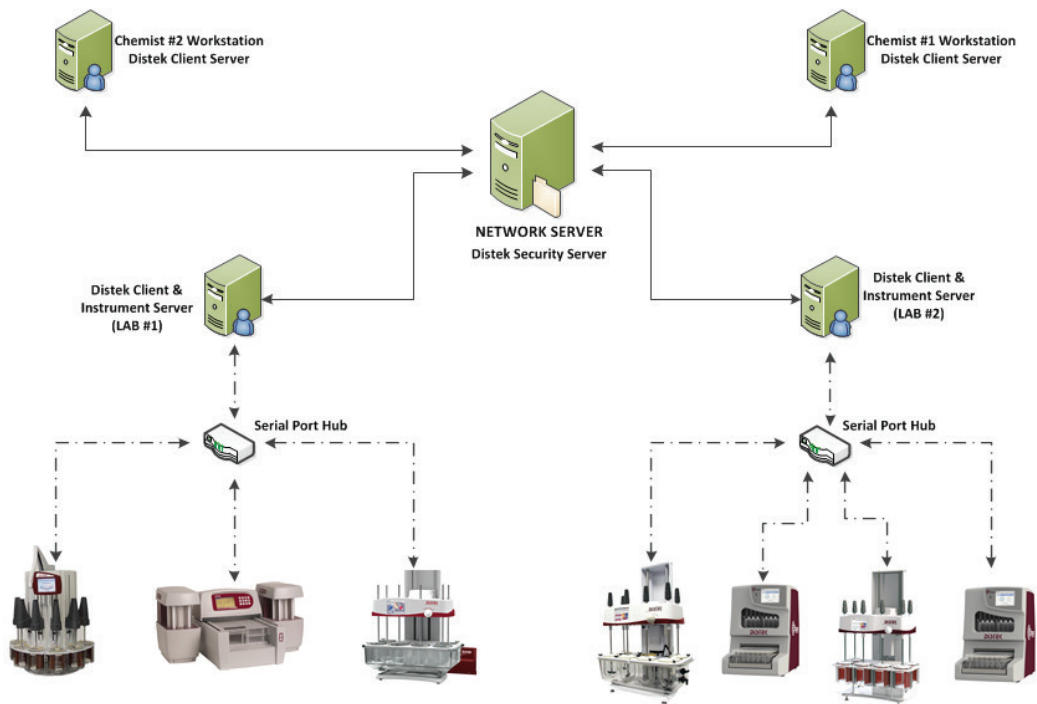
654 Petrolia Road,  
Toronto, ON M3J 2W3

Tel: (416) 736-6166  
Toll-Free: (800) 387 3570  
Fax: (416) 736-9346



## SPECIFICATIONS

<b>Window Requirements</b>			
For Windows 7 / 10, you must have administrative privileges to install Distek Cipher Software.			
Full Administrative access must also be available to the network server (domain controller) if the application will be installed in a Server/Client configuration. Access to the Server User Manager is required for adding Groups and granting User access to those Groups.			
<b>Minimum Computer Requirements (Client):</b>		<b>Minimum Server Requirements (Only required for a Server):</b>	
<ul style="list-style-type: none"> <li>• Intel Pentium ® Processor 1.8 GHz or equivalent</li> <li>• Microsoft ® Windows 7 / 10 (32 or 64 bit)</li> <li>• Microsoft .NET Framework 4.5.1 or higher</li> <li>• Internet Explorer 11 or higher</li> <li>• Minimum of 2GB of RAM</li> <li>• 200MB of available hard disk space</li> <li>• Available USB port (for a serial hub)</li> </ul>		<ul style="list-style-type: none"> <li>• Intel Pentium ® Processor 1.8 GHz or equivalent</li> <li>• Microsoft ® Windows Compatible Server</li> <li>• Microsoft .NET Framework 4.5.1 or higher</li> <li>• Internet Explorer 11 or higher</li> <li>• Minimum of 4GB of RAM</li> <li>• 200MB of available hard disk space</li> </ul>	
<b>Firmware Requirements - Dissolution Systems</b>		<b>Firmware Requirements - Sampling Systems</b>	
Cipher is capable of working with the following Dissolution Systems:		Cipher is capable of working with the following Sampling Systems:	
TCS Model 2100 C Model 2500 / 2500 RTD Model 2500 Select Premier 5100 Evolution 6100 Evolution 6300 symphony 7100	FW Rev. 1.40 or higher FW Rev. 2.31 or higher FW Rev. 2.05 or higher FW Rev. 3.00 or higher FW Rev. 3.00 or higher FW Rev. 2.12 or higher FW Rev. 2.12 or higher FW Rev. 2.02 or higher	DS 4300 Eclipse 5300 Evolution 4300	FW Rev. 2.10 or higher FW Rev. 1.02 or higher FW Rev. 2.10 or higher



**BETATEK INC.**  
Instrumentation Superbly Supported  
*L'instrumentation à son meilleur*

654 Petrolia Road,  
Toronto, ON M3J 2W3

Tel: (416) 736-6166  
Toll-Free: (800) 387 3570  
Fax: (416) 736-9346